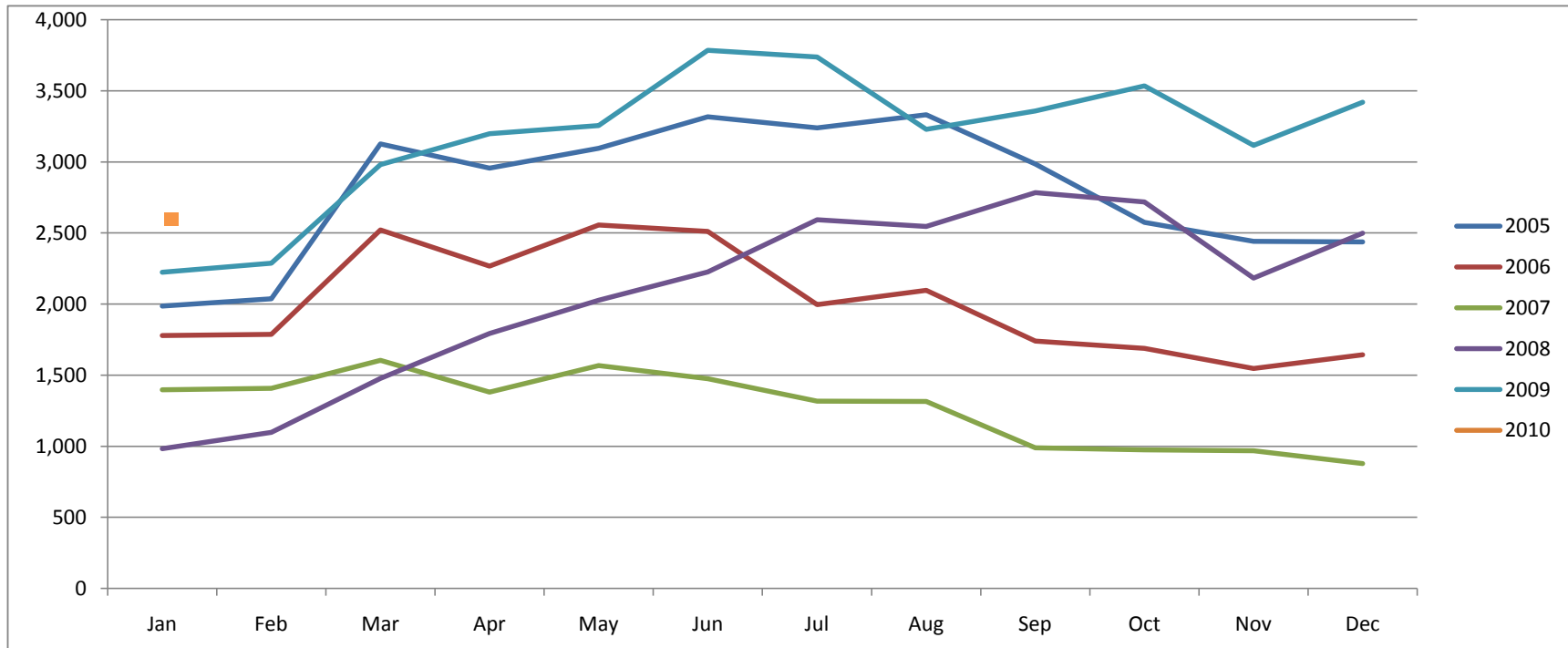


## Monthly Comparison of SFR Sales Volumes for 2005 - 2010

Source: GLVAR

	Jan	Feb	Mar	Apr	May	Jun	Jul	Aug	Sep	Oct	Nov	Dec	Totals
<b>2005</b>	1,985	2,038	3,127	2,957	3,096	3,318	3,240	3,331	2,985	2,574	2,441	2,437	<b>33,529</b>
<b>2006</b>	1,778	1,787	2,521	2,266	2,556	2,510	1,996	2,097	1,739	1,689	1,547	1,644	<b>24,130</b>
<b>2007</b>	1,397	1,407	1,605	1,381	1,568	1,476	1,318	1,316	990	974	968	879	<b>15,279</b>
<b>2008</b>	983	1,098	1,478	1,794	2,026	2,226	2,592	2,545	2,783	2,718	2,183	2,498	<b>24,924</b>
<b>2009</b>	2,224	2,288	2,980	3,198	3,255	3,785	3,738	3,229	3,358	3,535	3,117	3,420	<b>38,127</b>
<b>2010</b>	2,608												<b>2,608</b>

INFORMATION FROM SOURCE DEEMED RELIABLE, BUT NOT GUARANTEED.



***For All of Your Title and Escrow Needs, Please Contact Me.***

***Kristy Black***

**Business Development**

Cell - (702) 303-0885 \*\*\* Fax - (702) 942-8164

**EMAIL at: [Kristina.Black@fnf.com](mailto:Kristina.Black@fnf.com)**

**Visit our Website at: <http://www.FidelityLV.net>**

